

## Zyxel P330W router in Bridge + Client Mode

This guide is a simple, easy to understand how-to so that you can use your Zyxel P330W router in Bridge + Client mode. Enough with the technical jargon already so I'll make it simpler to understand. The end use of this whole process is going to be that you'll reduce wires to your internet connection router. Let me explain the setup with the following schematic:



The dotted line from the internet router to the Zyxel P330W signifies a wireless connection and the regular line from Zyxel P330W to Desktop / other device is a physical LAN cable. This terminology will be used throughout this document. The wireless router, unless otherwise mentioned will be the main router (yellow) and the Zyxel router will be, well, Zyxel router (green).

If you get this setup working you can enjoy the comfort of a wireless connection while reducing wires in your setup and still keep using your devices which need a LAN cable to connect to the internet.

With the help of the following screenshots I'll explain the procedure of getting this setup.

### First Step

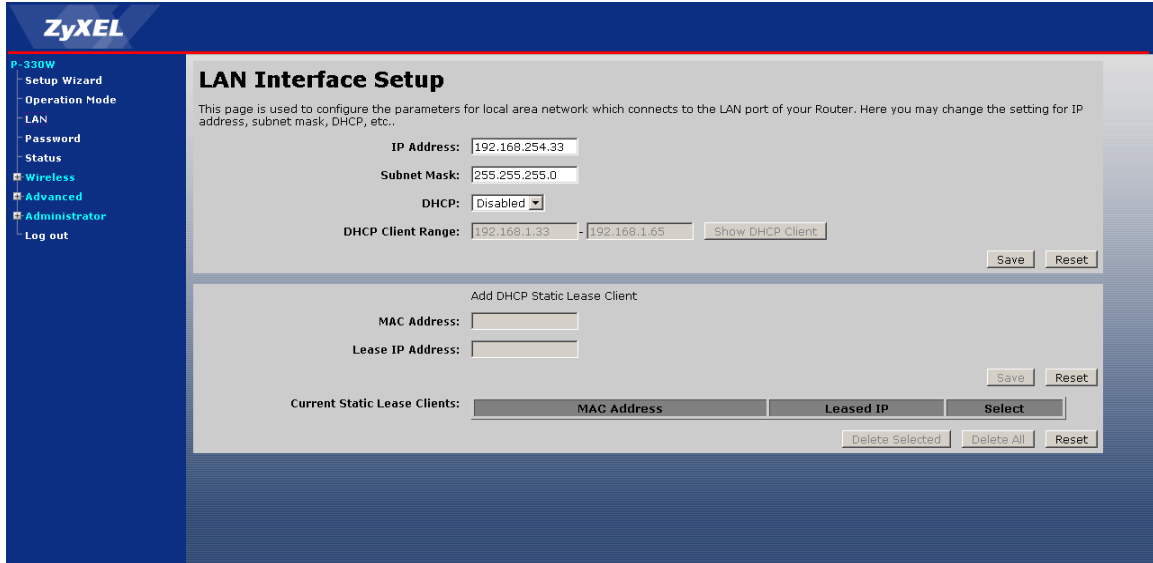
The internet router at your home should have the SSID broadcast on. This is basically the ID of your network which is visible when you are seeing the list of available networks. If this is switched off (should be on by default in most cases), then you would not be seeing your network in the list of available networks and you would be needing to connect any new devices by specifying the name of the network.

This option will most probably be the settings tab of the wireless router.

### Second Step

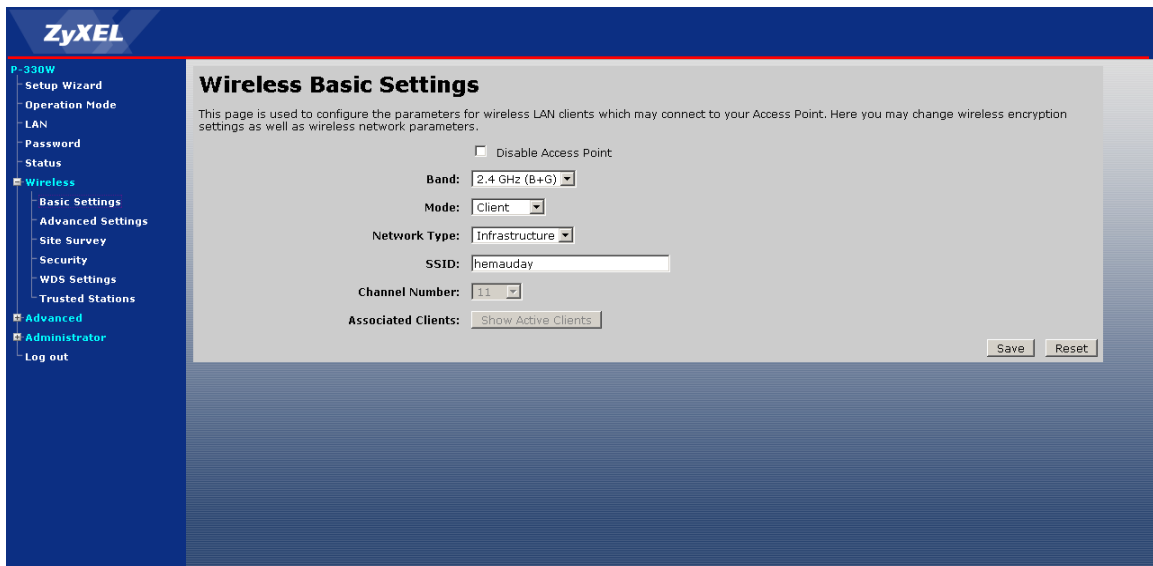
Now you need to go to the admin panel of the Zyxel router (192.168.1.1 by default, with 'admin' as username and 'admin' as password) and go to the LAN section. Now you need to change the IP address of the router and the DHCP configuration. This is shown in the following screenshot.

The IP of Zyxel is changed to an IP on the same subnet of the main router, which will not be used. In this case, the IP range of the main router is 192.168.254.xx and 192.168.254.33 is chosen for the Zyxel modem.



### Third Step

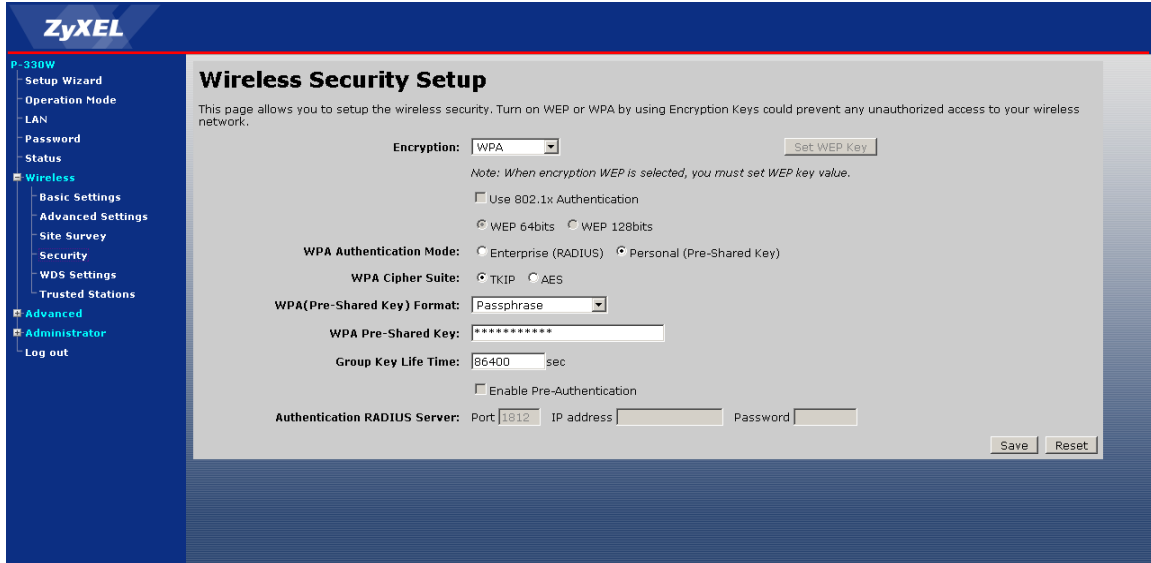
After the previous step is done, change the SSID of the Zyxel to match that of the internet router. This is shown in the following screenshot. In this case, the original router's name was hemauday. Do not disable the access point (I.e. do not select disable access point)



And hence the same was set in the Zyxel.

### Fourth Step

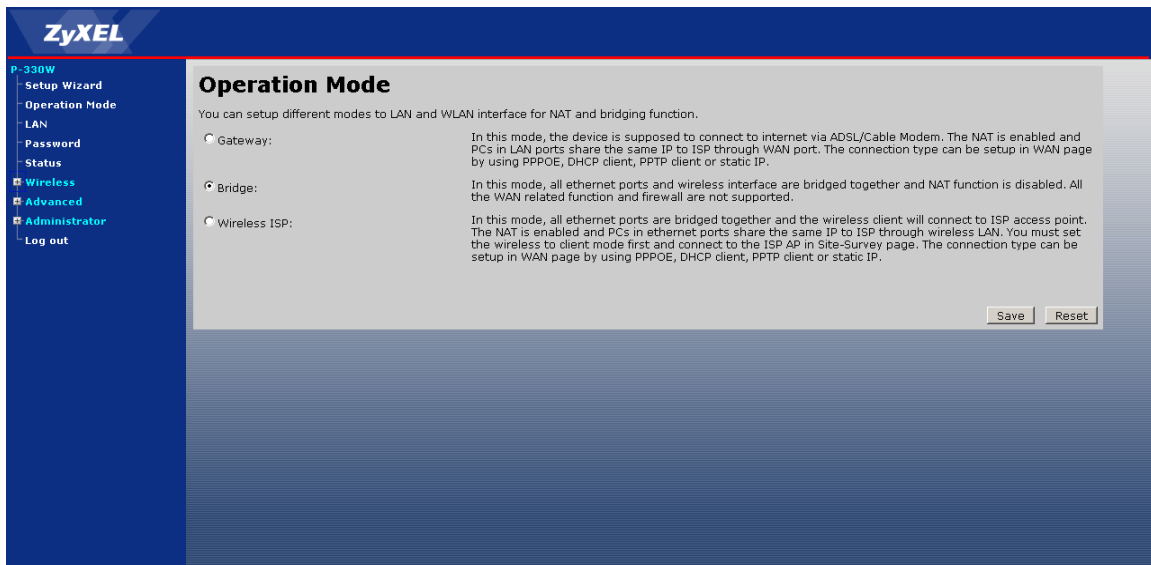
Set the WPA key to be the same as the internet router. The kind of protection should also be the exact same as the router. So for eg, the router has WPA - PSK - TKIP. So it is set to the same in Zyxel. If it is WPA - PSK - AED, then it should be the same in Zyxel. The following screenshot illustrates that:



Ofcourse, do not forget to save any changes 😊

### Fifth Step

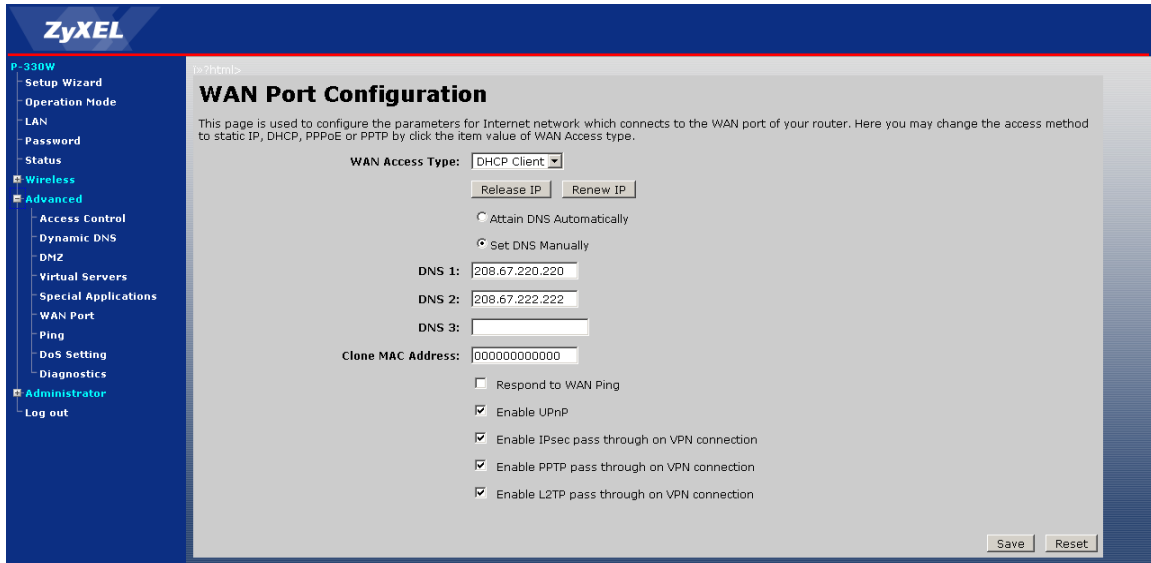
Now in operation mode page, set the Zyxel to Brige Mode. Shown in the following screenshot.



At this stage, after saving the changes Zyxel will reboot with the changes.

## Sixth Step

Now, set Zyxel to DHCP client mode in Advanced->WAN Port. In this case, the DNS has been set manually but you can leave it to Attain automatically and save changes.



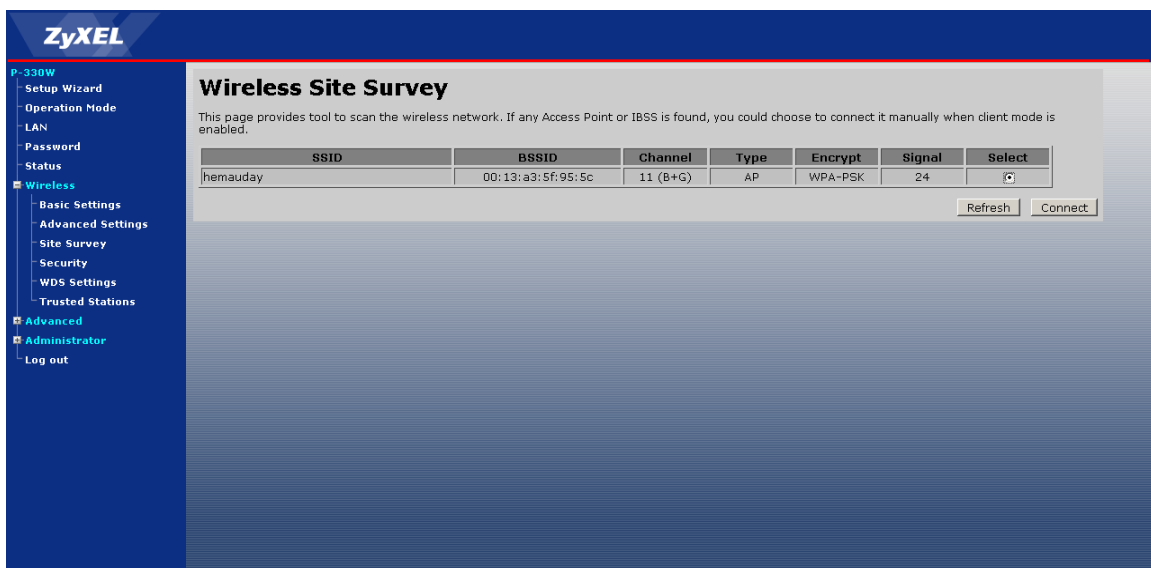
The screenshot shows the ZyXEL P-330W WAN Port Configuration page. The left sidebar contains a navigation menu with options like Setup Wizard, Operation Mode, LAN, Password, Status, Wireless, Advanced, Access Control, Dynamic DNS, DNS, Virtual Servers, Special Applications, WAN Port, Ping, DoS Setting, Diagnostics, Administrator, and Log out. The main content area is titled "WAN Port Configuration" and includes a description: "This page is used to configure the parameters for Internet network which connects to the WAN port of your router. Here you may change the access method to static IP, DHCP, PPPoE or PPTP by click the item value of WAN Access type." The configuration options are as follows:

- WAN Access Type: DHCP Client (selected)
- Buttons: Release IP, Renew IP
- Attain DNS Automatically:
- Set DNS Manually:
- DNS 1: 208.67.220.220
- DNS 2: 208.67.222.222
- DNS 3: (empty field)
- Clone MAC Address: 000000000000
- Respond to WAN Ping:
- Enable UPnP:
- Enable IPsec pass through on VPN connection:
- Enable PPTP pass through on VPN connection:
- Enable L2TP pass through on VPN connection:

Buttons for Save and Reset are located at the bottom right of the configuration area.

## Seventh Step

Now, go to Site survey and click refresh. Here you should see your router appear. Click connect. It should say successfully connected. If not, you have not set something correctly, start over again if you don't what. If successfully connected, reboot Zyxel and connect clients via the LAN ports! You're all set 😊



The screenshot shows the ZyXEL P-330W Wireless Site Survey page. The left sidebar contains a navigation menu with options like Setup Wizard, Operation Mode, LAN, Password, Status, Wireless, Basic Settings, Advanced Settings, Site Survey, Security, WDS Settings, Trusted Stations, Advanced, Administrator, and Log out. The main content area is titled "Wireless Site Survey" and includes a description: "This page provides tool to scan the wireless network. If any Access Point or IBSS is found, you could choose to connect it manually when client mode is enabled." Below the description is a table with the following data:

SSID	BSSID	Channel	Type	Encrypt	Signal	Select
hemauday	00:13:a3:5f:95:5c	11 (B+G)	AP	WPA-PSK	24	<input checked="" type="checkbox"/>

Buttons for Refresh and Connect are located at the bottom right of the table.